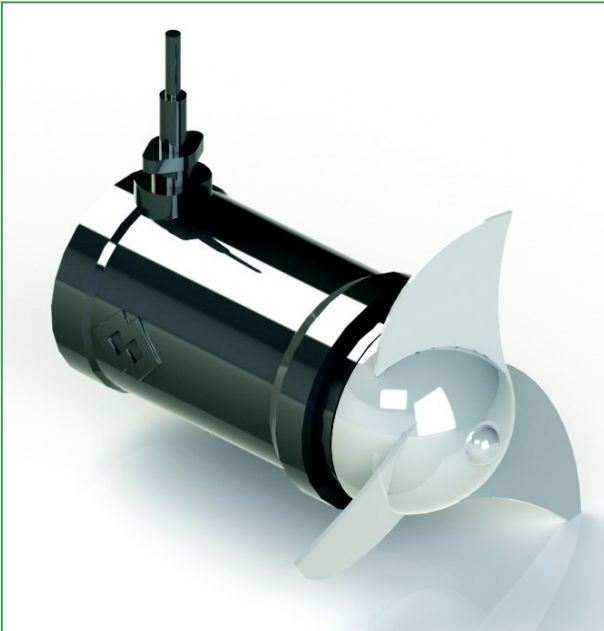




GREENCROP SEPARATION

Greencrop WSM Submersible Mixer



The GCWSM submersible mixer consists of a waterproof cast iron body with internal electric motor and a special impeller.

The drive unit enables the impeller that has a geometry meant for high effectiveness, allowing the floating solids to homogenise to the material settled on the bottom of the tank.

The submersible mixer has been designed to mix the material, prevent it from settling on the bottom of the tank and make it suitable, after being treated by a mixer pump, for being fed into a separator.

It allows the fibrous materials collecting in the tank to remain in good condition and prevents potential clogging of the pumps and separators.

With the development of AD plants becoming more popular, the GCWSM pumps are a beneficial addition to improving separation performance.

The GCWSM submersible mixer, available in various sizes, finds its most typical application in manure processing due to its mixing function that ensures high performance for the feeding of separators or in conveying sewage or waste water.

The GCWSM type can also be used in biogas plants (in concrete open tanks) for the treatment of sewage (pigs and poultry) and in the treatment of waste water.



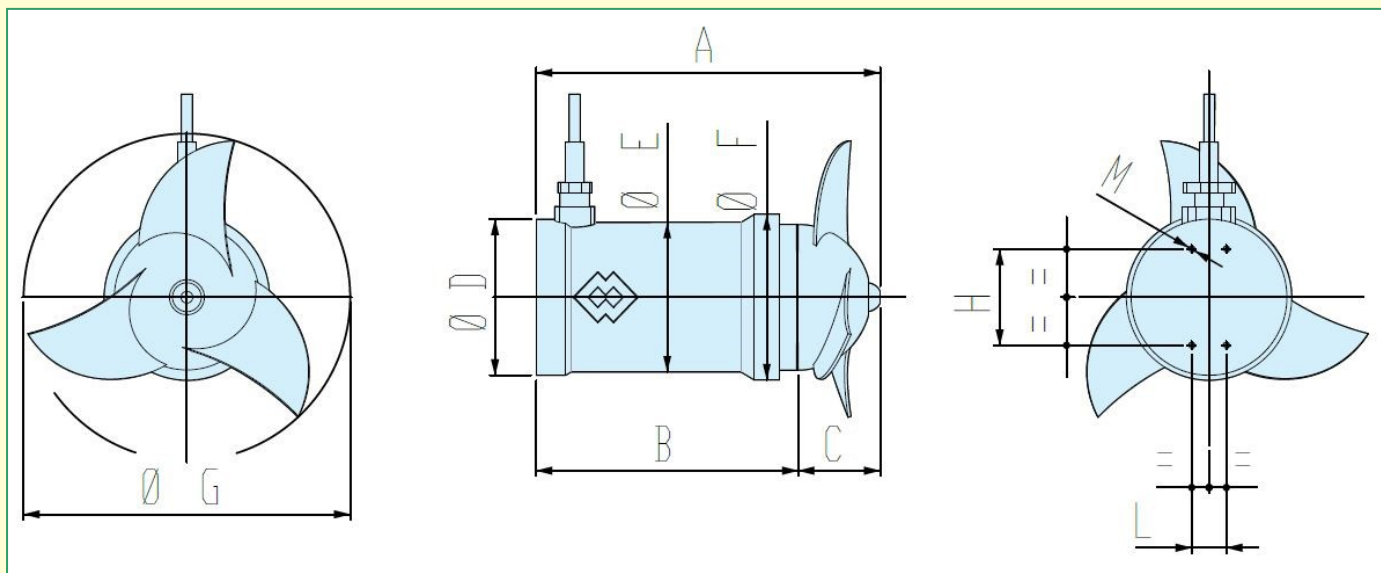
Benefits

- Wide range available
- Sturdy design
- Excellent mixing performance
- Quick installation
- Easy maintenance
- Low running costs

Technical features/performance

- Drive unit power rating: 1.5 kW - 7.5kW
- Effective mixing up to 40 metres

Overall dimensions



Type	DIMENSIONS (mm)										Weight (Kg)
	A	B	C	ØD	ØE	ØF	ØG	H	L	M	
GCWSML 15	464	386	78	200	177	200	260	80	40	4x M10 Bores	53
GCWSML 22	570	488	82	227	195	225	320	80	40	4x M12 Bores	80
GCWSML 30	605	519	86	245	230	259	395	130	65	4x M12 Bores	104
GCWSML 40	578	446	132	292	277	310	600	180	65	4x M12 Bores	149
GCWSML 55	633	501	132	292	278	310	600	180	65	4x M12 Bores	169
GCWSML 75	688	556	132	292	277	310	600	180	65	4x M12 Bores	195



GREENCROP

Dereham Road, Beeston, King's Lynn, Norfolk PE32 2LE
 Tel 01328 701992
 Fax 01328 700111
 Email enquiries@greencrop.co.uk
 www.greencrop.co.uk

Dealer stamp